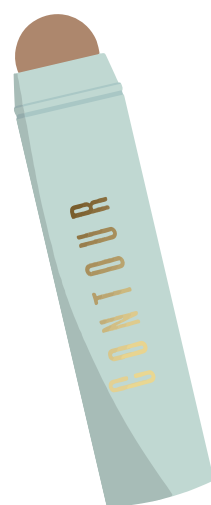
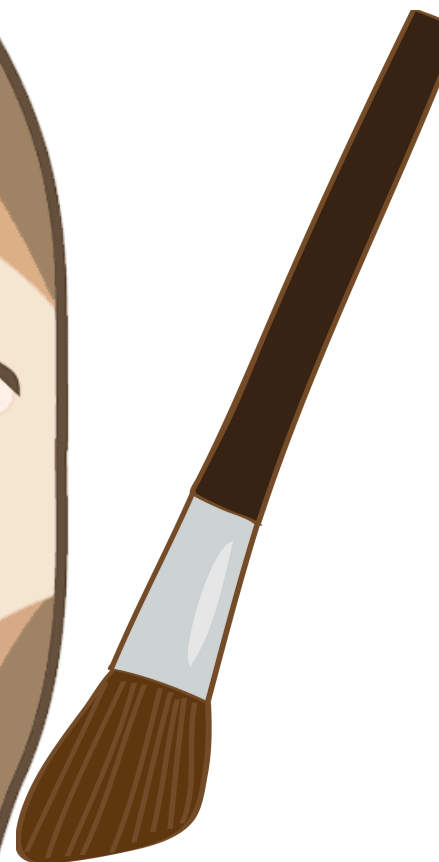
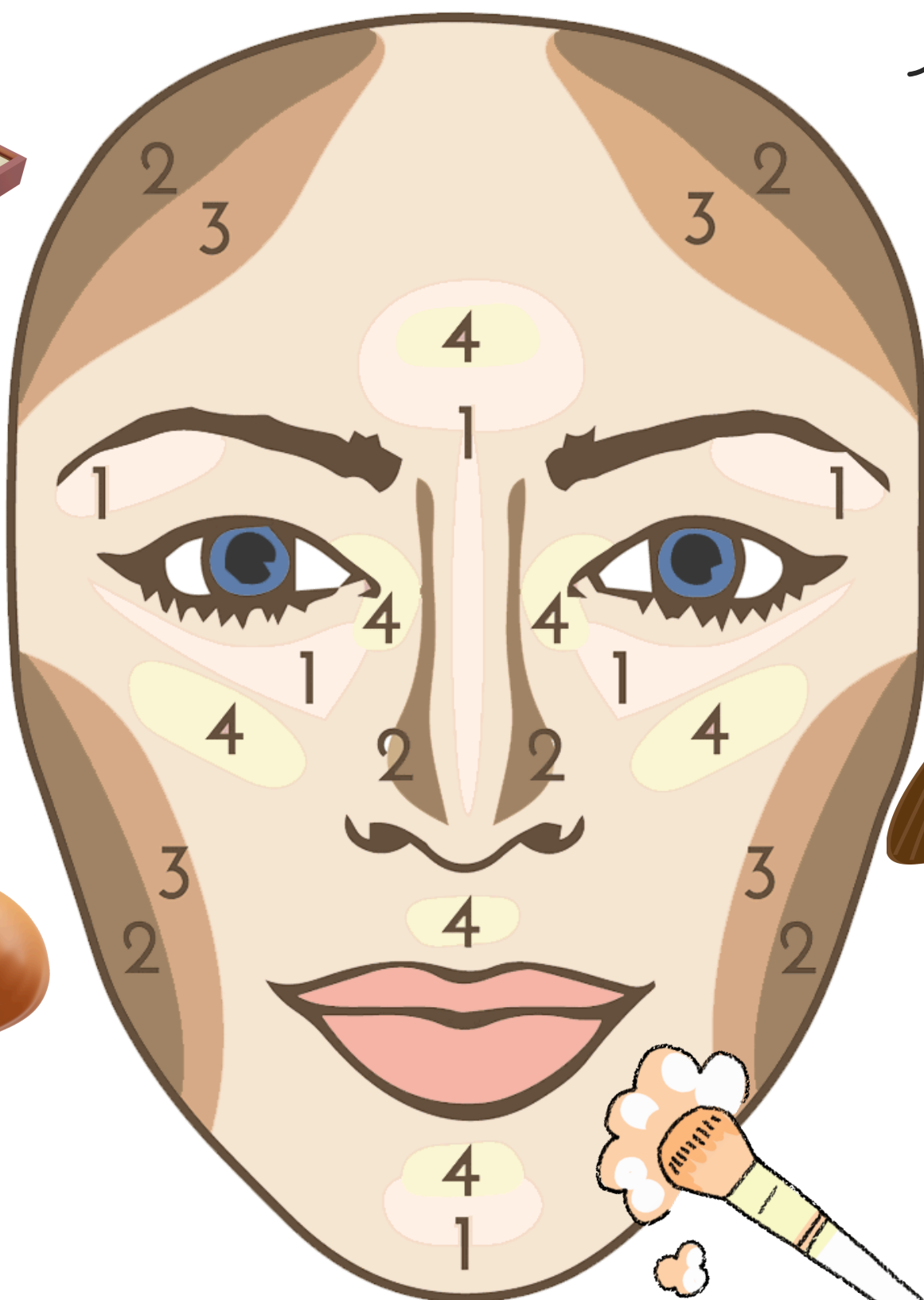
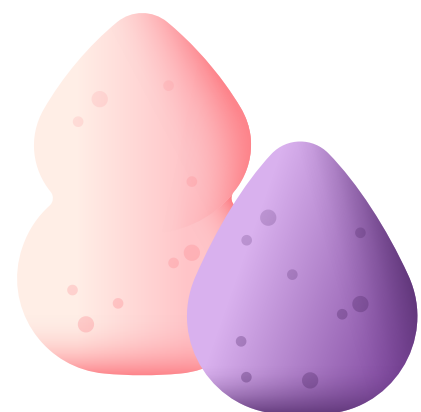
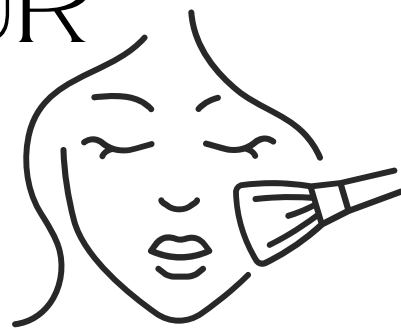


HOW TO CONTOUR YOUR FACE WITH MAKEUP

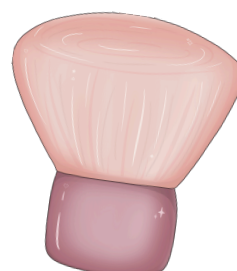


1. USE DARKEST COLOR ON YOUR TEMPLES, THE SIDES OF YOUR NOSE, JAWLINE AND ANY OTHER AREAS YOU'D LIKE TO NARROW DOWN

2. ADD A THIN LAYER OF HIGHLIGHT UNDERNEATH YOUR EYES, TO THE CENTER OF THE FOREHEAD, ON THE CHIN, AND THE TIP OF THE NOSE.

3. THEN SOFTEN THE CONTOUR LINES AS YOU BLEND WITH A BIG BLENDING BRUSH. BLEND IT ALL TOGETHER TO CREATE NATURAL-LOOKING SHADOWS.

4. FINALLY, DUST A SOFT SHEEN OF SHIMMER TO COMPLETE YOUR LOOK!



SHOPWITHMEMAMA.COM